



- Dual Range 60 lb Capacity
- 3,000 PLU's & 1,000 Ingredients
  - Optional Networking
- 50 Standard Label Formats
- Legal for Trade - COC # 07-042A2

# CL5000

LABEL PRINTING SCALE

Wireless  
Networking  
Available



**CAS**  
S • C • A • L • E



# CL 5000 LABEL PRINTING Scale

## PRODUCT LINE-UP



Standard Bench Model



Pole Model



Hanging Model

## FEATURES

### Display

The **VFD** display is used for displaying Tare, Weight, Unit Price and Total Price. The **Alphanumeric** Display is used for all program menus, PLU names, scrolling message, etc. The bright purple display gives high legibility for programming and promotion.



### PLU Keys

The **Double Click Call** feature allows the operator to recall PLU s by double-clicking the speed key instead of having to use the shift key.

LAMB PATTIES	VEAL CUBES	VEAL CUBE STEAK	PORK LOIN TOP LOIN
CHICKEN SKEWER	VEAL FOR STEW	VEAL BONES	PORK SAUSAGE
BEEF SKEWER	LAMB LOIN	LAMB RIB CHOPS	DUCK

The Standard Bench Model comes with 96 total speed keys, while the Pole Model & Hanging Model comes equipped with a total of 144 Speed Keys.

### PRINTER & LABEL CARTRIDGE

Achieve print speeds up to 100 mm/sec and print resolution of 202 dpi for crisp clear labels. The removable label cartridge makes it easy for users to quickly reload labels. Designed for simplicity.



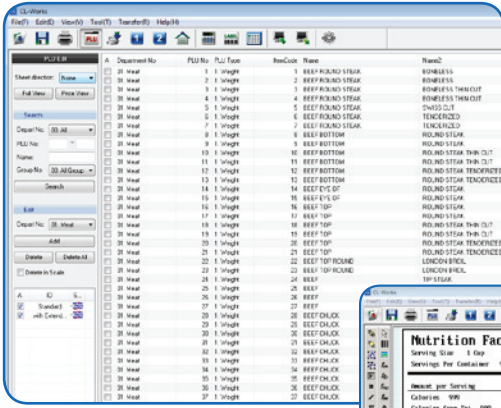
### Label Formats

The CL 5000 comes with 50 preset common label formats stored in memory. Up to 20 more custom label formats can be added using the label editing function of the CL-Works software program. Various die cut or continuous label sizes up to 120mm in length can be used.

<p><b>SIRLOIN STEAK CENTER CUT</b></p> <p>PACKED ON   SELL BY   WTA, LBS.</p> <p>FEB-25-08 MAR-01-08 1.98</p> <p>1 4.00 9.68</p> <p>0.15 4.31 8.69</p> <p>PRICE PER LB TOTAL PRICE</p> <p>CAS CORP 201-933-9002 EAST RUTHERFORD, NJ</p>	<p><b>SMOKED TURKEY</b></p> <p>0.23 1 19.83 2.99 59.29</p> <p>JUL-13-08 JUL-17-08</p> <p>PACKED ON   SELL BY   NET WT, LBS.   PRICE PER LB.   TOTAL PRICE</p> <p>CAS CORP 201-933-9002 EAST RUTHERFORD, NJ</p> <p><b>SAFE HANDLING INSTRUCTIONS</b></p> <p>THIS PRODUCT WAS PREPARED FROM INSPECTED AND PASSED MEAT AND/OR POULTRY. SOME FOOD PRODUCTS MAY CONTAIN BACTERIA THAT COULD CAUSE ILLNESS IF THE PRODUCT IS MISHANDLED. CHOPPED IMPROPERLY FOR YOUR PROTECTION. FOLLOW THESE SAFE HANDLING INSTRUCTIONS:</p> <ul style="list-style-type: none"> <li>KEEP REFRIGERATED OR FROZEN. THAW IN REFRIGERATION OR MICROWAVE.</li> <li>KEEP RAW MEAT AND POULTRY SEPARATE FROM OTHER FOODS. WASH WORKING SURFACES INCLUDING CUTTING BOARDS, UTENSILS AND HANDS AFTER TOUCHING RAW MEAT OR POULTRY.</li> <li>COOK THOROUGHLY. KEEP HOT FOODS HOT. REFRIGERATE LEFTOVERS IMMEDIATELY OR DISCARD.</li> </ul>
<p><b>BEEF ROUND STEAK</b></p> <p>INGREDIENTS: CHICKEN BELLIES, HENGE BELL, BROWN CORNED BEEF, WHITE FLAVOR, BLACK, LIGHT OR PEPPER, SALT, VEGETABLE, GARLIC, ONION, BROWN SAUCE, POLY ACID, WATER, YEAST, HIGH FRUCTOSE CORN SYRUP, CONTAINS LESS THAN 2% OF THE FOLLOWING: SALT, PARTIALLY HYDROGENATED SOYBEAN OIL, EGG WHITE, WATER, SODIUM STEARATE, LACTATE, CITRIC ACID, PARTIALLY HYDROGENATED COTTONSEED OIL, LACTIC ACID, CALCIUM SULFATE, CALCIUM</p> <p>PACKED ON   SELL BY   WTA, LBS.</p> <p>JUL-22-08 JUL-24-08 5.73</p> <p>1 2.99 17.13</p> <p>0.08</p> <p>PRICE PER LB TOTAL PRICE</p> <p>CAS CORP 201-933-9002 EAST RUTHERFORD, NJ</p>	<p><b>BEEF ROUND STEAK BONELESS</b></p> <p>0.08 1 5.68 2.99 16.98</p> <p>JUL-22-08 JUL-24-08</p> <p>PACKED ON   SELL BY   WTA, LBS.   PRICE PER LB.   TOTAL PRICE</p> <p>CAS CORP 201-933-9002 EAST RUTHERFORD, NJ</p>

# CL 5000 LABEL PRINTING Scale

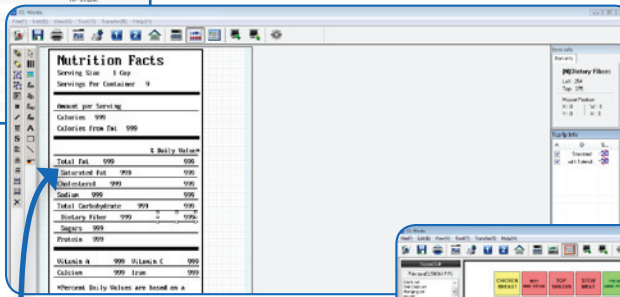
## CL WORKS - PC SOFTWARE



The CL Works software program allows you to create and edit PLUs, program store information, design custom labels and unique keyboard layouts and much, much more.  
Compatible with Microsoft Windows® 2000/XP/Vista

### PLU Editor

Easy PLU Management control for all scales. PLU's can be imported and exported easily



### Label Editor

Create and edit custom label formats. Easily download your custom labels to the scales.

### Keypad Editor

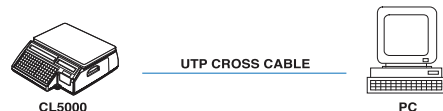
Setup and download custom keyboard designs. Use color images in your keys for easy recognition.



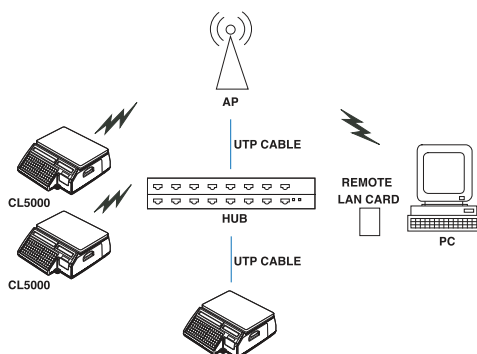
**Nutrition Facts Label**

## OPTIONAL NETWORKING

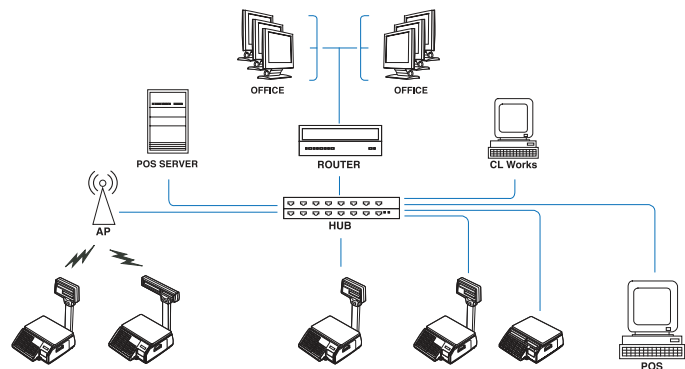
- TCP/IP Communication Protocol
- Up to 99 Scales
- IEEE 802.11B Specification Wireless Network
- 64/128 bit WEP Security system
- 1 to 1, Multi to Multi. Wired/Wireless Network
- Network structure suitable for large, medium or small markets



1 to 1



Multi to Multi



Wired/Wireless Network

# CL 5000 LABEL PRINTING Scale

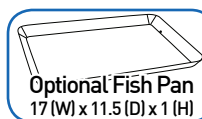
## Features

- 60 lb Capacity Dual Range
- Standard: 3,000 PLU's & 1,000 Ingredients  
Optional: 10,000 PLU's & 1,500 Ingredients
- Speed Keys  
CL5000B: 96 (48 keys x 2)  
CL5000R: 144 (72 keys x 2)  
CL5000H: 144 (72 keys x 2)
- 50 Standard Label Formats/Up to 20 Custom Labels
- High Speed Thermal Printer
- Flash ROM for easy firmware upgrades
- Multiple barcode formats

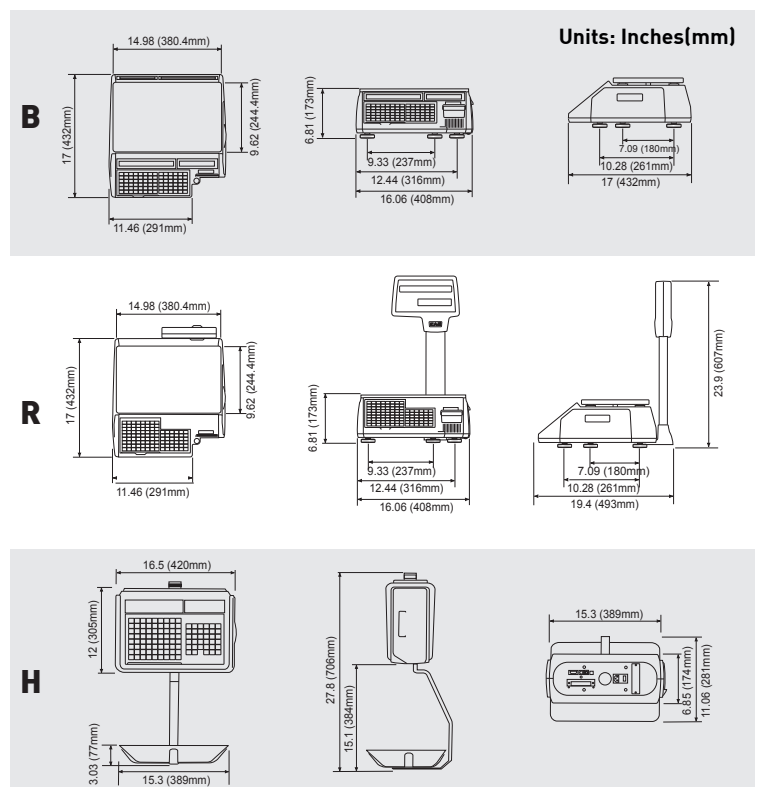
- English, Chinese, Korean, or Spanish Characters
- Menu Code System
- CL-Works Software Package Included  
- PLU Editor - Label Editor - Keypad Editor  
- Compatible with Microsoft Windows® 2000/XP/Vista
- **Options:**  
- Ethernet or Wireless Networking - Expanded Memory  
- Full Body Protective Cover - Fish Pan  
- Remote Platform - Label Cartridge
- Legal for Trade - COC # 07-042A2

## Specifications

<b>Weighing Capacity</b>	60 lb Capacity Dual Range 0 - 30 x 0.01 lbs / 30 - 60 x 0.02 lbs 0 - 15 kg x 5 g / 15 - 30 kg x 10 g
<b>Measurement Type</b>	Load Cell
<b>Display Type</b>	VFD & Alphanumeric
<b>Display Digit</b>	4/4/6/6 - Tare/Weight/Unit Pr/Total Pr
<b>Weight Units</b>	Lb or kg
<b>Printer</b>	Thermal Print
<b>Label Size</b>	Width: 40mm ~ 60mm Length: 30mm ~ 120mm
<b>Barcode Formats</b>	UPC, UPC13, EAN13, EAN13+5, I2of5, Code128, Code93, Codabar, and more.
<b>Interface</b>	RS-232C
<b>Keyboard Interface</b>	PS/2
<b>Power Source</b>	AC 100~240V, 50/60Hz
<b>Operating Temperature</b>	-10°C ~ 40°C / 14°F ~ 104°F
<b>Platter Size (inch/mm)</b>	B/R: 15 (W) x 9.6 (D) / 381 (W) x 244 (D) H: 15.3 (W) x 11.06 (D) / 389 (W) x 281 (D) RP: 15.75 (W) x 11.8 (D) x 3.4 (D) / 400 (W) x 300 (D) x 86 (H)
<b>Dimensions (inch/mm)</b>	CL5000B (in): 16 (W) x 17 (D) x 6.8 (H) (mm) 406.4 (W) x 432 (D) x 173 (H) CL5000R (in): 16 (W) x 17 (D) x 23.9 (H) (mm) 406.4 (W) x 432 (D) x 607 (H) CL5000H (in): 16.5 (W) x 11.06 (D) x 27.8 (H) (mm) 420 (W) x 281 (D) x 706 (H)
<b>Product Weight</b>	CL5000B: 24 lbs (10.9 kg) CL5000R: 25 lbs (11.3 kg) CL5000H: 31.3 lbs (14.2 kg) CL5000RP: 23.8 lbs (10.8 kg)



## Dimensions



**CAS USA Corporation**  
Corporate Office

99 Murray Hill Parkway  
East Rutherford, NJ 07073

Tel: (201) 933-9002

Fax: (201) 933-9025

<http://www.cas-usa.com>

