

Digital Video Surveillance

Comprehensive Video Security



Talon™ Server Program Features

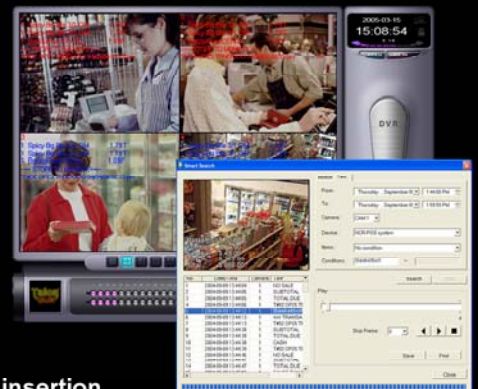
- > 1, 4, 6, 9, 10, 16, 32 multi channel view support
- > Normal 1, 4, 9, 16 multi channel switching TV-out support
- > 1~16 channel sound recording
- > Normal / Multi / Icon Panorama / Smart search
- > Pan / Tilt / Zoom / Focus control support
- > Hardware Watchdog for auto rebooting
- > Save to a file with embedded watermark
- > E-mail event alert
- > Voice message notification to a telephone
- > Dynamic IP address support
- > Many types of event notification:
 - Beep, Mark, Popup, TV-out popup,
 - Second screen popup, Talon-net notify,
 - Relay output, E-mail, PTZ Preset, Phone call

Talon™ Client Program Features

- > Multi Net DVR central station support
- > Remote access to multiple DVRs (up to 36 DVRs)
- > Remote access to DVR settings and recorded data
- > Relay / Images / PTZ controls including preset and tour
- > Communication protocols: PSTN, DSL, ISDN, and TCP/IP
- > Display live and playback video from the DVR server
- > Save remote data locally while viewing
- > Two-way voice communication
- > Automatic popup on Talon-net when motion is detected on Talon server

Exceptional Clarity and Connectivity

Talon™ DVR



Built-in text insertion

- > Supported devices: POS, Access Control and ATM
- > Search by text and time
- > Up to 32 devices per DVR server
- > Communication: RS-232/422/485 and TCP/IP
- > Optional port converter

Talon™ DVR Specifications

LIVCAP Board Features

- > 1~32 video input / 1~16 sensor input / 1~4 relay output
- > 1~2 sound input (4 or 16 channel optional)
- > Hardware watchdog
- > Multi channel switching TV-out (Normal, 1, 4, 9, 16 view)
- > One board real time display and record (Max. 480 fps display / 240 fps record)
- > MPEG4 soft CODEC recording
- > No frame loss
- > High resolution 352x240, 704x240, 704x480 in 16 (32) channel
- > SDK support

MPG Board Features

- > 1~16 video input / 1~16 sensor input / 1~8 relay output
- > 1~16 integrated sound input / 1~2 channel TV-out
- > Hardware watchdog
- > Multi channel switching TV-out (Normal, 1, 4, 9, 16 view)
- > One board real time display and record (Max. 480 fps display / 240 fps record)
- > Superb image quality by powerful hardware MPEG-4 processor
- > No frame loss in multi-channel
- > High resolution 704x480 up to 16 channels, without ghost images
- > Small recording frame size (1~2 KB/Frame)
- > Low CPU load
- > SDK support

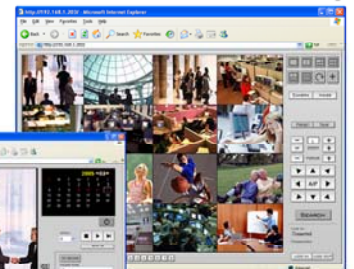
Specifications by Model

MODEL	RECORD FRAMES	VIEW FRAMES	VIDEO CHANNELS	AUDIO CHANNELS	SENSOR INPUTS	SENSOR OUTPUTS
TALON DVR LIVCAP CARD (Software Compression Boards)						
120N16	120	120	16	2	16	4
240N16	240	240	16	2	16	4
12016LIV	120	480	16	2	16	4
24016LIV	240	480	16	2	16	4
240N32	240	240	32	2	16	4
480N32	480	480	32	2	16	4
TALON DVR MPG CARD (Hardware Compression Boards)						
MPG12004	120	120	4	4	4	4
MPG12004LP	120	120	4	4	4	4
MPG24008	240	240	8	8	8	4
MPG48016	480	480	16	16	16	8

Web Client Support

- > Microsoft Internet Explorer Support
- > No special software is required
- > Relay / Images / ptz control
- > Searching with adjustable frame rate control
- > Sound search
- > AVI creation
- > Two-way voice communication

Live Viewing



Search



Included Talon™ Accessories

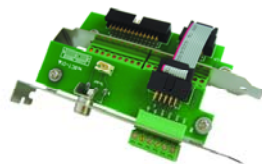


Pigtail



RS-232 to RS-485 converter

Sensor / Relay ports



PDA Support

- > Windows CE and Windows Mobile 2003 pocket PC support
- > Wireless access to DVR
- > Live viewing over cellular phone internet connection

